

Omniplance Virtual

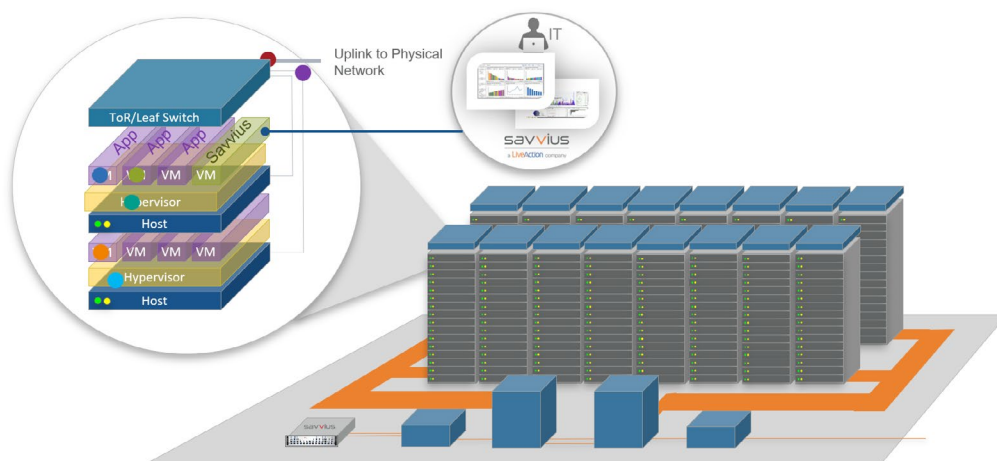
Omniplance Virtual offers packet capture and real-time monitoring in virtualized environments

The Challenge

Almost every enterprise is considering or going through one of the following transitions: data center consolidation, virtualization, or cloud adoption. This raises the challenges of application performance, management and security, all of which require deep visibility into network data. In addition to the data centers, virtualization is also impacting the branch and remote offices. Virtualization however creates new blind-spots as traditional network visibility mechanisms do not work or scale within virtual infrastructure. To address those challenges, a new approach to network visibility is required.

The Solution

Omniplance Virtual, the networking solution for virtualized environments, allowing effective monitoring into east-west traffic in virtualized environments within data centers and remote offices. This capability enhances the ability to monitor the health and performance of infrastructure and applications. Omniplance Virtual includes both the packet capture and analysis of award-winning Omniplance Ultra and real-time network monitoring. Omniplance Virtual users can now monitor virtual network traffic in real time, track the worst-performing flows on those networks, and capture and store packet data to investigate the problem with the click of a button.



With Omniplance Virtual, you can:

- Solve performance issues with proven workflows and analytics based on years of Savvius network trouble-shooting experience
- Run as a virtual machine (VM) in VMware ESXi or Redhat KVM environments
- Reduce the need for truck-rolls and increase total cost of ownership
- Keep business-critical services like Voice over IP (VoIP) running smoothly
- Perform conversational analysis with the 'ultimate audit trail' for transactions, such as e-commerce transactions
- Realize superior power and precision at a price significantly lower than other network forensics products
- See issues of network and application latency, communications quality, and capacity
- Drill down to the conversations you need to see and get the information you need to know
- Configure custom dashboard views that highlight critical network performance



Omniplance Virtual est disponible en France chez

NETWALKER

0 177 628 628

Deployed in a Highly Virtualized Data Center

As more businesses pursue digital transformation initiatives, many are choosing to deploy virtual servers and appliances at the network edge to save costs, simplify management, increase flexibility, and standardize hardware. With Omniplance Virtual, Savvius brings the same high level of network visibility that they offer for traditional networks into those virtual environments.

Omniplance Virtual can be deployed in a highly virtualized data center to monitor east-west traffic moving between virtual machines, or to monitor virtual network functions. Without a virtualized monitoring solution like Omniplance Virtual, this traffic cannot be monitored and issues between those machines could go unnoticed by IT and network operations teams.

Complete network visibility, including the virtualized elements of the network, means users can identify and fix network issues faster, ensure their business-critical applications do not go down, and understand the real experience of their end-users.

Omniplance Virtual Product Features

Real-Time Monitoring

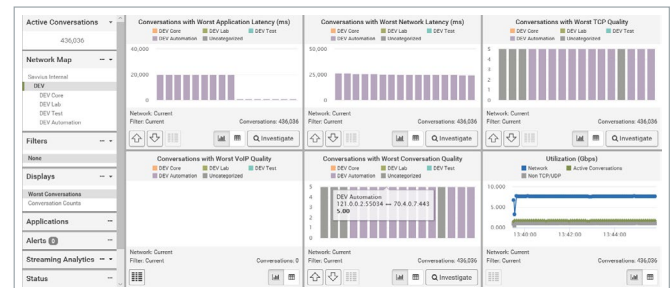
Omniplance Virtual includes monitoring functionality and allows IT professionals to quickly identify and solve network performance problems, as well as locate network security issues. The monitoring feature provides instant and actionable visibility into the most-risky network conversations that require immediate attention. Omniplance Virtual is a complete network investigation tool comprised of: actionable flow-based monitoring, rapid root-cause analysis, and integrated packet level forensics.

Network Data Capture and Retention

Omniplance Virtual supports industry-leading intelligent packet capture and analysis capabilities and enables real-time and post-event analytics on distributed networks at up to 10 Gbps (depending on the vNIC, CPU, and memory). Built on years of packet intelligence technology, Omniplance Virtual gives IT engineers the power to resolve issues within virtual infrastructure with network performance, multi-segment latency, application performance, TCP and VoIP quality, and much more.

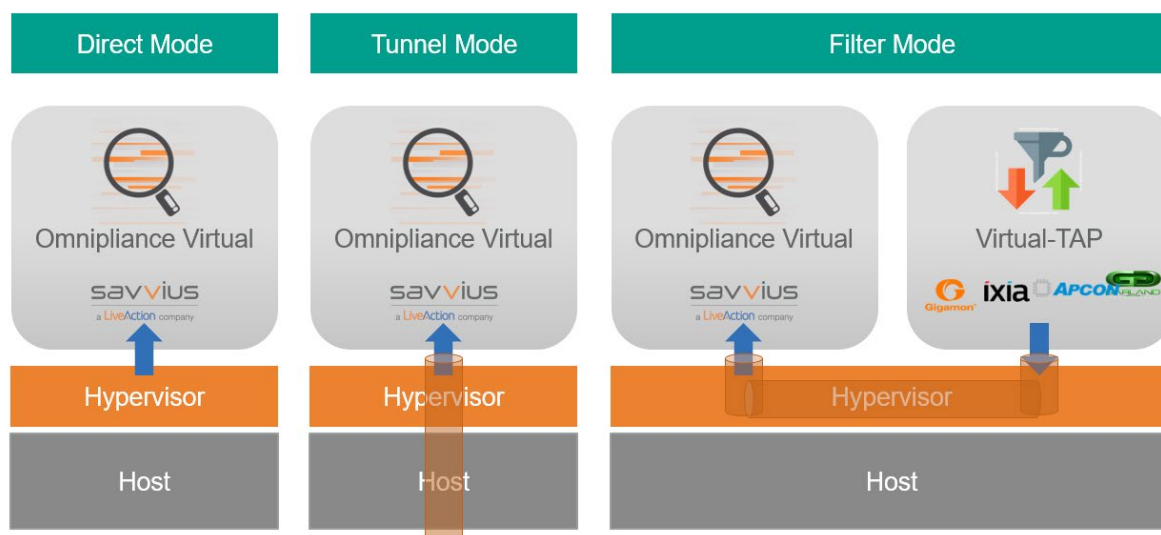
Highlights

- Capture packets at speeds of up to 10 Gbps
- Packet data can be stored on the host, in the vSAN data-store, or discarded as a rolling buffer
- May be deployed via vSwitch, vTap/vPB or overaly tunnels in a highly virtualized data center
- Does not require rack space, power, or cooling provisioning
- Packets captured with Omniplance Virtual can be analyzed in Omnipeek with no change in workflow or interface
- Includes Expert events based on 20+ years of networking and packet analysis expertise to help users resolve network issues quickly



Omnipliance Virtual Deployment Modes

- Monitoring/capturing through the standard/distributed virtual-switch (vSwitch)
- Monitoring/capturing through the tunneled overlay network
- Monitoring/capturing through the virtual-Tap (vTap) and virtual-packet broker (vPB)

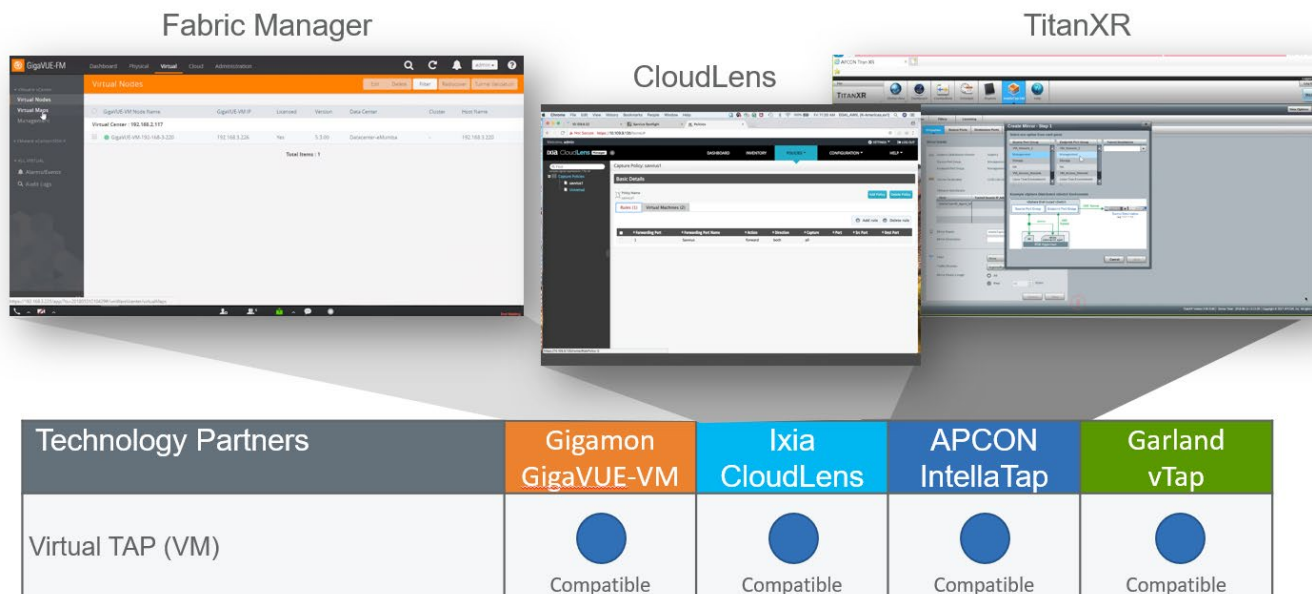


Omnipliance Virtual Specifications for KVM and ESXi

SPECIFICATIONS	
Specification	Requirement
Memory	8 GB RAM
Virtual CPU (vCPU)	4 vCPU (x86_64)
Virtual Storage for Guest	(Minimum of 120 GB)
Hard Disk 1:	20 GB
Hard Disk 2:	100 GB
Virtual Network Interfaces	2 vNIC using VMXNET3: <ul style="list-style-type: none"> • Management Port • Capture Port
PERFORMANCE	
Capability	Performance
Throughput	1 Gbps*
Number of Flows	100,000*

* Compute hardware type, virtual resource allocation and environment dependent

Omniplance Virtual Solution Eco-System



Learn more about Omniplance Virtual

Email sales@savvius.com
or call +1 (925) 937-3200
Or visit us online at
<https://www.savvius.com>

About Savvius, a LiveAction Company

Savvius, a LiveAction company, offers Omniplance and Omnipeek for powerful packet capture and analytics, providing the unparalleled visibility needed to anticipate and resolve network performance issues. LiveAction simplifies the management of complex networks by providing real-time visualization and analytics for SD-WAN, Voice, Video, and Quality of Service monitoring. The LiveAction platforms are LiveNX™, designed for large enterprises, and LiveSP™, designed for Service. Learn more at www.savvius.com.



NETWALKER

0 177 628 628

Omniplance Virtual est disponible en France sur NetWalkerStore.com

Savvius, a LiveAction company
1340 Treat Blvd, Suite 500
Walnut Creek, CA 94597

Phone: +1 (925) 937-3200
Fax: +1 (925) 937-3211
Email: sales@savvius.com
Website: www.savvius.com

#DS08184